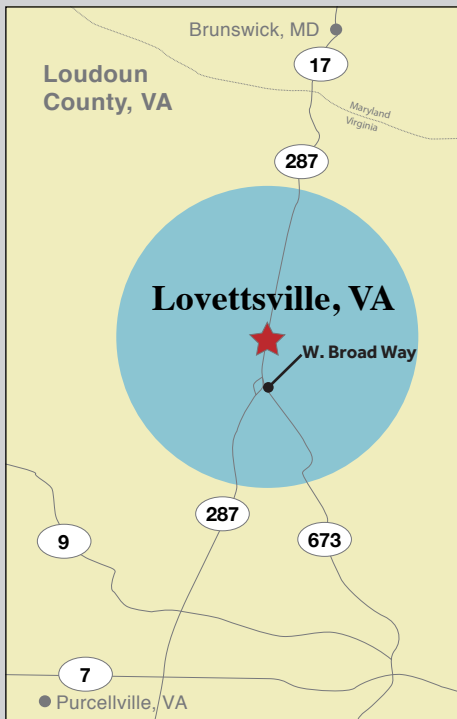


## RETAIL SPACE FOR LEASE

The new and exciting downtown area in the Town of Lovettsville and a destination for the surrounding area of western Loudoun County.

### WHERE WE ARE



### ADDRESS

18 & 20 Town Square  
Lovettsville, VA 20180

### CONTACT INFO

Judd Bostian  
jbostian@nvretail.com  
703.448.4312

Patrick Hayden  
phayden@nvretail.com  
703.448.4307

18,000 SF of Class A Retail

Fronting VA Rt. 287  
(12,000 VPD)



### CURRENT CO-TENANCY



### HIGHLIGHTS

- Lovettsville Square is a dazzling neighborhood shopping center venue with vivid "Town Center" appeal – conveniently located in the heart of Lovettsville, VA (Loudoun County).
- The site directly fronts Berlin Turnpike (VA Rt. 287) – the busy regional north-south connector between Purcellville, VA and Brunswick, MD.
- Phase I (18,000 SF) of the retail project is open and operating (with strong leasing momentum and quality co-tenancy), while Phase II is currently in the development planning stages.
- The Lovettsville trade area enjoys average household incomes of \$121,000+ and a population of approximately 20,000 within a five (5) mile trade radius.
- Phase I of the center has ample dedicated retail parking (90+ spaces), and highly desirable signage opportunity facing VA 287.

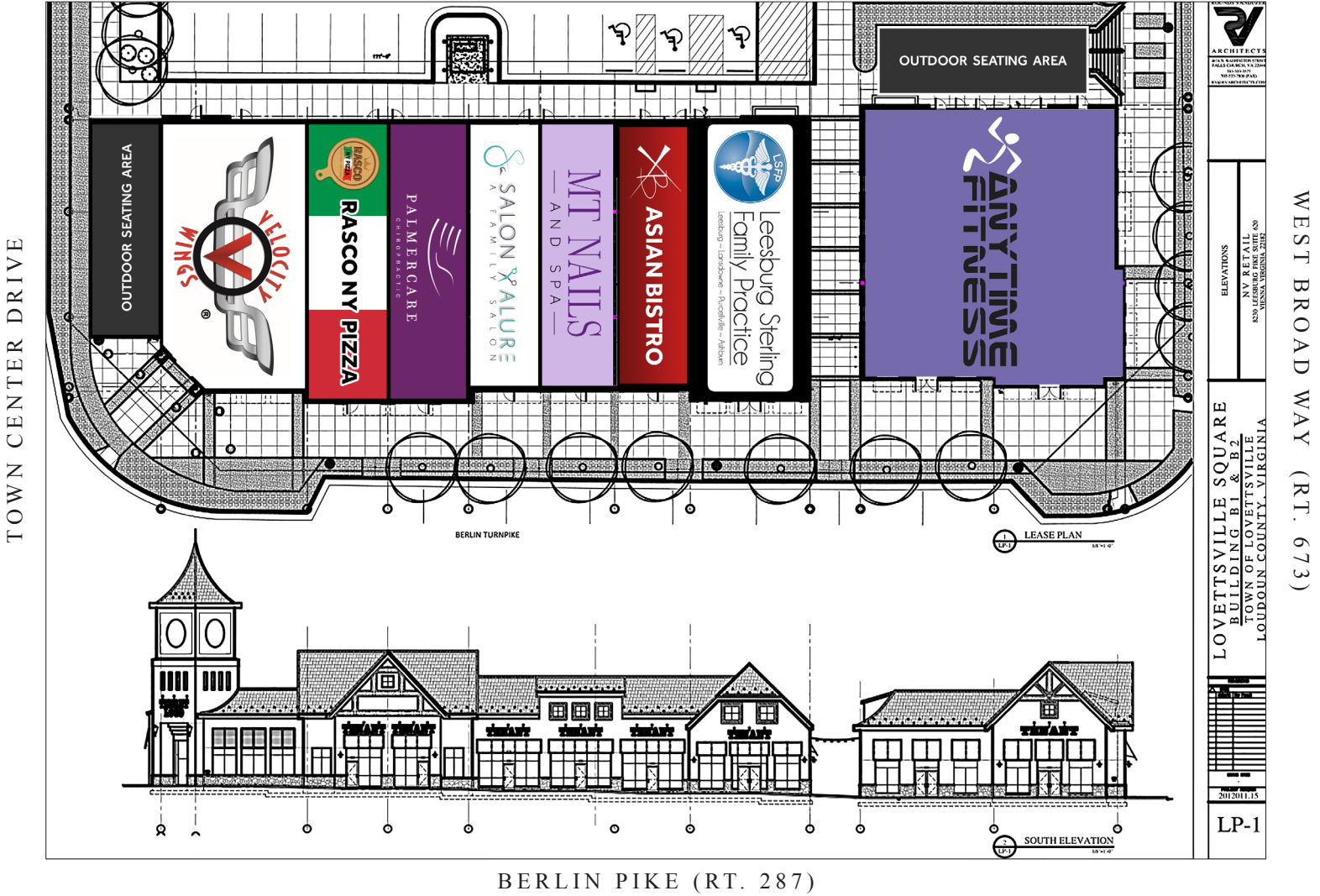
### 2019 PROJECTED DEMOGRAPHICS

DISTANCE RING	3 Miles	4 Miles	5 Miles
Population	9,114	15,063	17,850
Avg. HH Income	\$125,189	\$118,049	\$121,559

### DEMOGRAPHICS 2022

DISTANCE RING	3 Miles	4 Miles	5 Miles
Population	10,293	16,668	19,726
Avg. HH Income	\$141,368	\$134,271	\$137,577

## SITE MAP



## AVAILABILITIES

Phase I is fully leased.

## CONTACT INFO

**JUDD BOSTIAN**  
jbostian@nvretail.com  
703.448.4312

**PATRICK HAYDEN**  
phayden@nvretail.com  
703.448.4307

**SITE PLAN**

